

Operator
Telephone
Fax
e-Mail

Table of contents

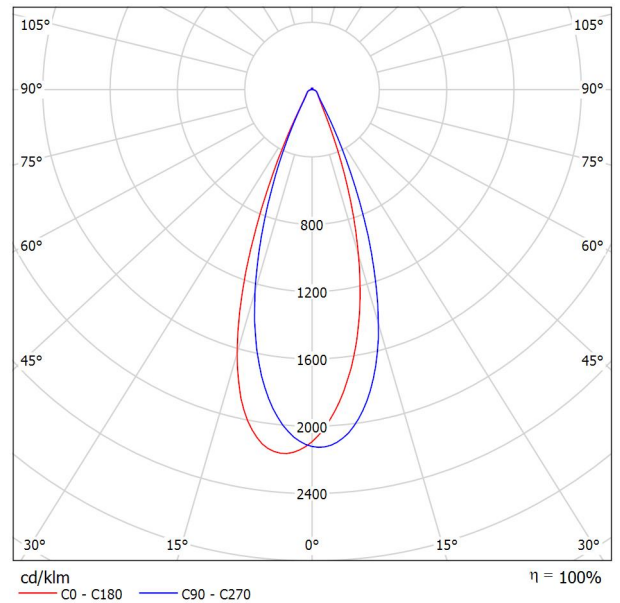
Project 1	
Table of contents	1
630W 630W	
Luminaire Data Sheet	2
500W-01 500W Led Flood 120D	
Luminaire Data Sheet	3
FL200W	
Luminaire Data Sheet	4
Exterior Scene 1	
Planning data	5
Luminaire parts list	6
Floor plan	7
Luminaires (layout plan)	8
Luminaires (coordinates list)	9
Sport Sites (layout plan)	14
Sport Sites (Coordinates List)	15
3D Rendering	18
False Color Rendering	19
Exterior Surfaces	
Ground Element 1	
Surface 1	
Isolines (E)	20
Greyscale (E)	21
Value Chart (E)	22

Operator
Telephone
Fax
e-Mail

630W 630W / Luminaire Data Sheet

See our luminaire catalog for an image of the luminaire.

Luminous emittance 1:



Luminaire classification according to CIE: 97
CIE flux code: 87 94 98 97 100

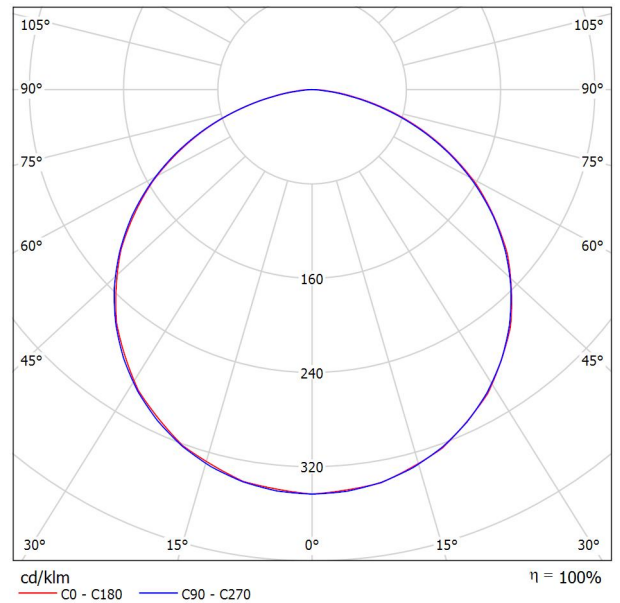
Due to missing symmetry properties, no UGR table can be displayed for this luminaire.

Operator
Telephone
Fax
e-Mail

500W-01 500W Led Flood 120D / Luminaire Data Sheet

See our luminaire catalog for an image of the luminaire.

Luminous emittance 1:



Luminaire classification according to CIE: 100
CIE flux code: 47 79 96 100 100

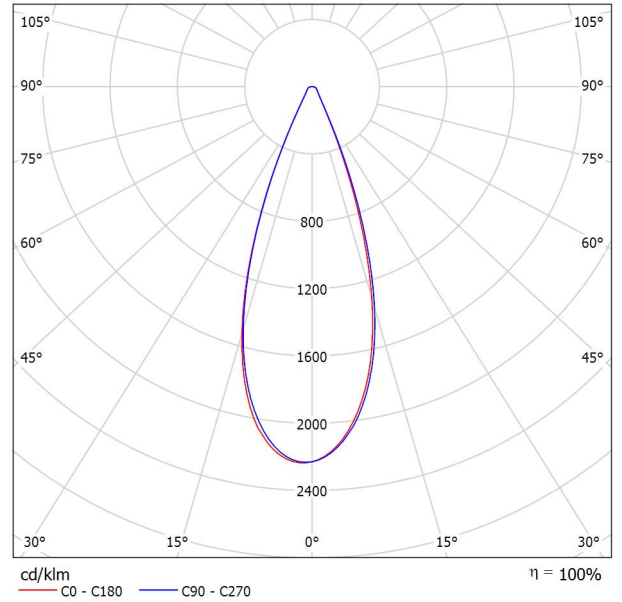
Due to missing symmetry properties, no UGR table can be displayed for this luminaire.

Operator
Telephone
Fax
e-Mail

FL200W / Luminaire Data Sheet

See our luminaire catalog for an image of the luminaire.

Luminous emittance 1:

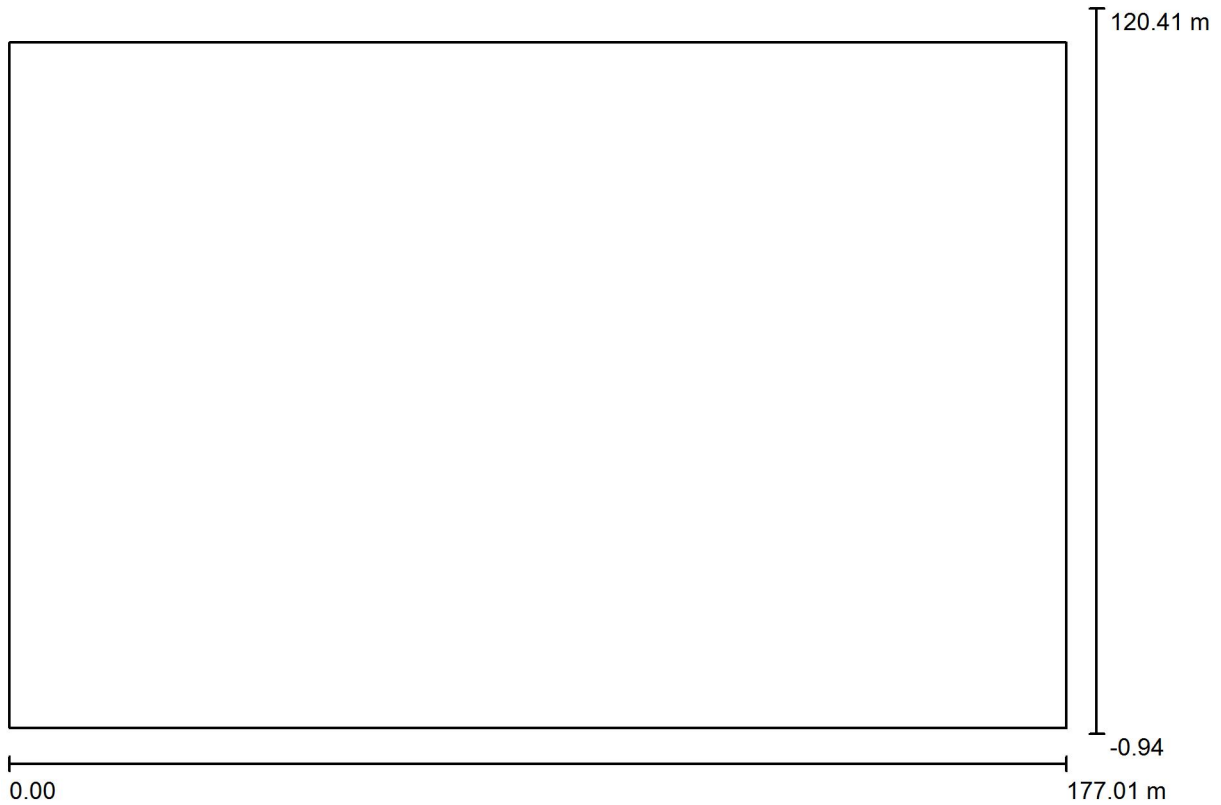


Luminaire classification according to CIE: 100
CIE flux code: 88 94 98 100 100

Due to missing symmetry properties, no UGR table can be displayed for this luminaire.

Operator
 Telephone
 Fax
 e-Mail

Exterior Scene 1 / Planning data



Light loss factor: 0.80, ULR (Upward Light Ratio): 22.5%

Scale 1:1266

Luminaire Parts List

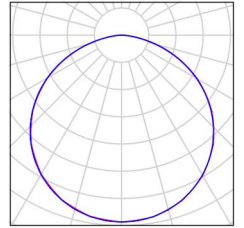
No.	Pieces	Designation (Correction Factor)	Φ (Luminaire) [lm]	Φ (Lamps) [lm]	P [W]
1	28	500W-01 500W Led Flood 120D (1.000)	66848	66805	506.0
2	120	630W 630W (1.000)	77269	77305	626.7
Total:			11143983	Total: 11147104	89372.0

Operator
Telephone
Fax
e-Mail

Exterior Scene 1 / Luminaire parts list

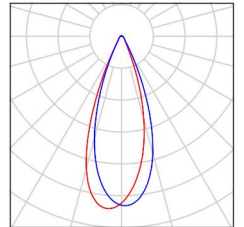
28 Pieces 500W-01 500W Led Flood 120D
Article No.: 500W-01
Luminous flux (Luminaire): 66848 lm
Luminous flux (Lamps): 66805 lm
Luminaire Wattage: 506.0 W
Luminaire classification according to CIE: 100
CIE flux code: 47 79 96 100 100
Fitting: 1 x User defined (Correction Factor 1.000).

See our luminaire catalog for an image of the luminaire.



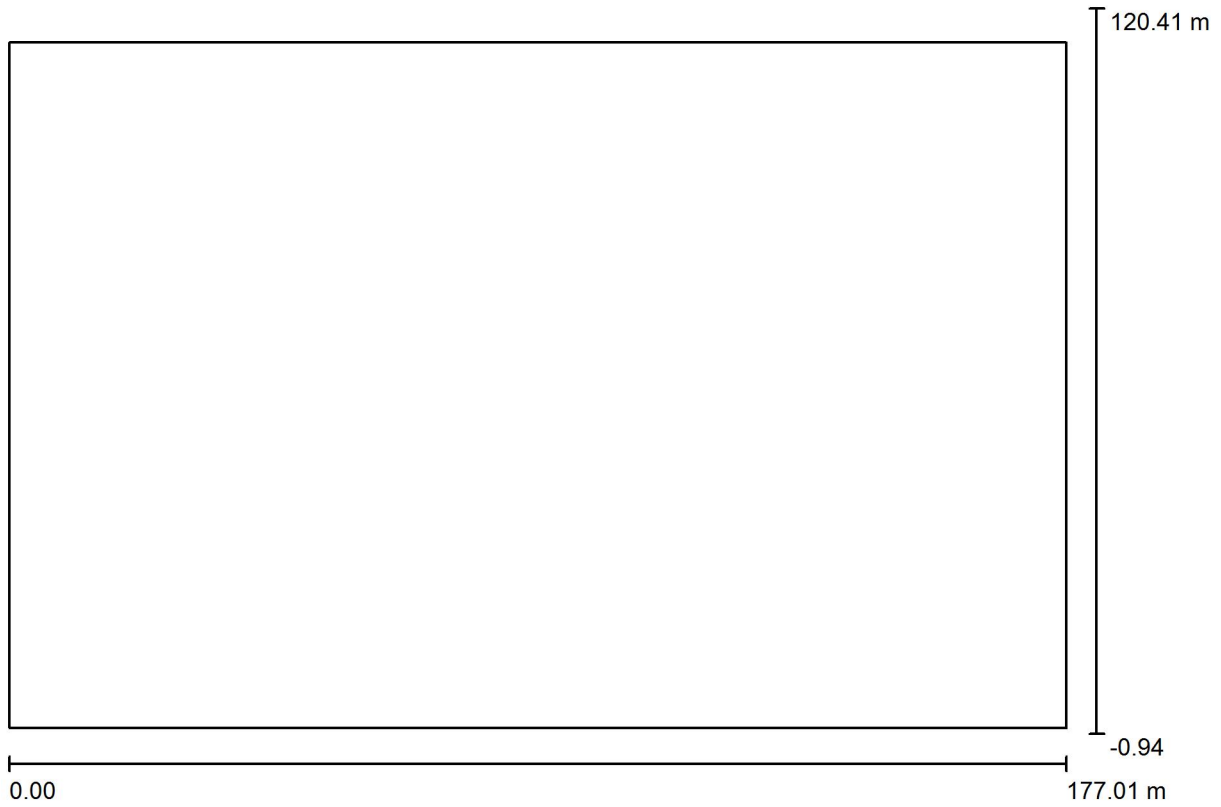
120 Pieces 630W 630W
Article No.: 630W
Luminous flux (Luminaire): 77269 lm
Luminous flux (Lamps): 77305 lm
Luminaire Wattage: 626.7 W
Luminaire classification according to CIE: 97
CIE flux code: 87 94 98 97 100
Fitting: 1 x User defined (Correction Factor 1.000).

See our luminaire catalog for an image of the luminaire.



Operator
Telephone
Fax
e-Mail

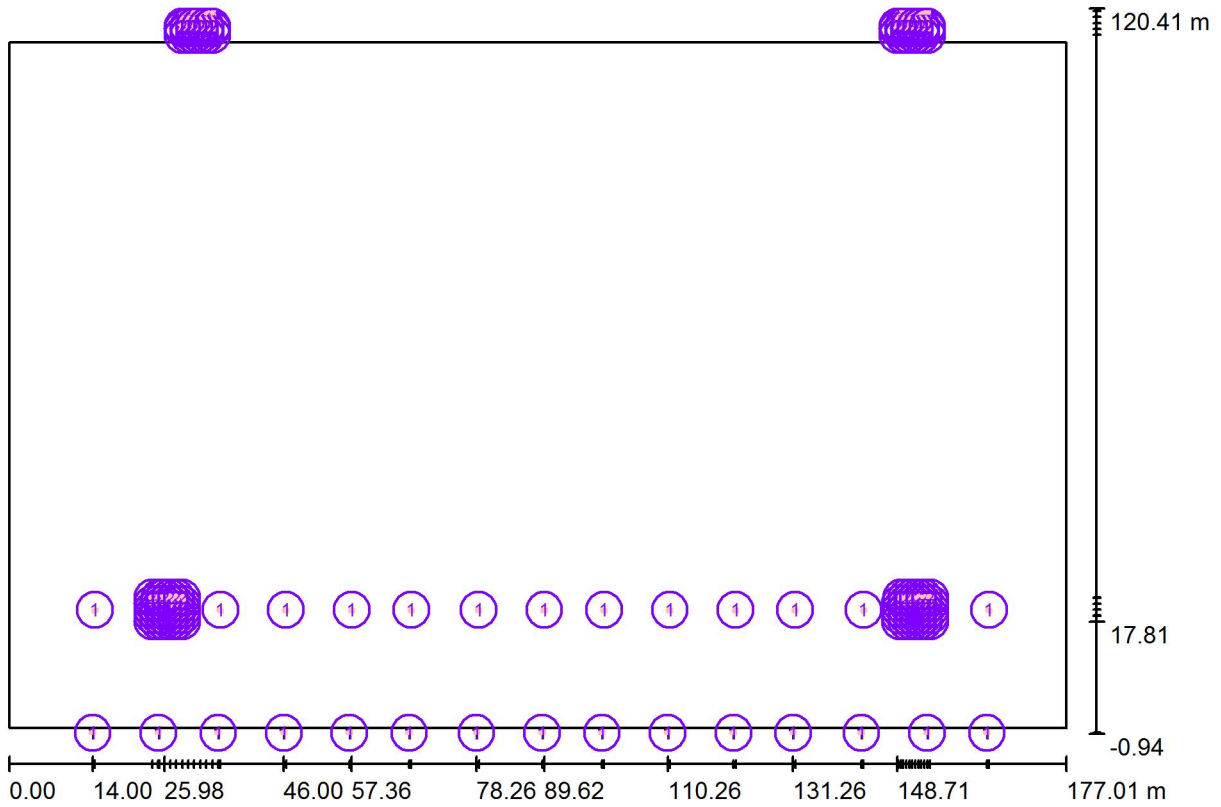
Exterior Scene 1 / Floor plan



Scale 1 : 1266

Operator
 Telephone
 Fax
 e-Mail

Exterior Scene 1 / Luminaires (layout plan)



Scale 1 : 1266

Luminaire Parts List

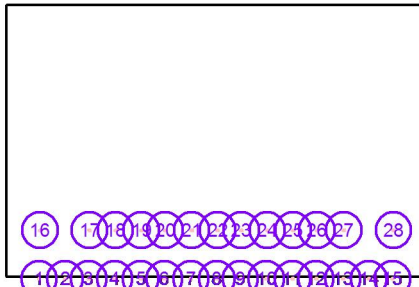
No.	Pieces	Designation
1	28	500W-01 500W Led Flood 120D
2	120	630W 630W

Operator
Telephone
Fax
e-Mail

Exterior Scene 1 / Luminaires (coordinates list)

500W-01 500W Led Flood 120D

66848 lm, 506.0 W, 1 x 1 x User defined (Correction Factor 1.000).



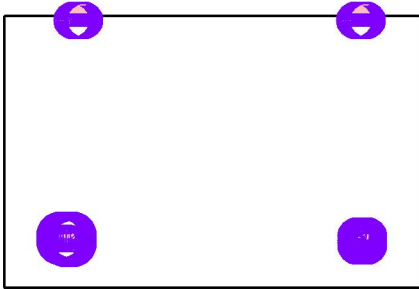
No.	Position [m]			Rotation [°]		
	X	Y	Z	X	Y	Z
1	14.000	-0.800	8.000	70.0	0.0	0.0
2	25.000	-0.800	8.000	70.0	0.0	0.0
3	35.000	-0.800	8.000	70.0	0.0	0.0
4	46.000	-0.800	8.000	70.0	0.0	0.0
5	57.000	-0.800	8.000	70.0	0.0	0.0
6	67.000	-0.800	8.000	70.0	0.0	0.0
7	78.262	-0.800	8.000	70.0	0.0	0.0
8	89.262	-0.800	8.000	70.0	0.0	0.0
9	99.262	-0.800	8.000	70.0	0.0	0.0
10	110.262	-0.800	8.000	70.0	0.0	0.0
11	121.262	-0.800	8.000	70.0	0.0	0.0
12	131.262	-0.800	8.000	70.0	0.0	0.0
13	142.700	-0.800	8.000	70.0	0.0	0.0
14	153.700	-0.800	8.000	70.0	0.0	0.0
15	163.700	-0.800	8.000	70.0	0.0	0.0
16	14.360	19.800	8.000	-70.0	-20.0	0.0
17	35.360	19.800	8.000	-70.0	20.0	0.0
18	46.360	19.800	8.000	-70.0	0.0	0.0
19	57.360	19.800	8.000	-70.0	0.0	0.0
20	67.360	19.800	8.000	-70.0	0.0	0.0
21	78.622	19.800	8.000	-70.0	0.0	0.0
22	89.622	19.800	8.000	-70.0	0.0	0.0
23	99.622	19.800	8.000	-70.0	0.0	0.0
24	110.622	19.800	8.000	-70.0	0.0	0.0
25	121.622	19.800	8.000	-70.0	0.0	0.0
26	131.622	19.800	8.000	-70.0	0.0	0.0
27	143.060	19.800	8.000	-70.0	-20.0	0.0
28	164.060	19.800	8.000	-70.0	20.0	0.0

Operator
Telephone
Fax
e-Mail

Exterior Scene 1 / Luminaires (coordinates list)

630W 630W

77269 lm, 626.7 W, 1 x 1 x User defined (Correction Factor 1.000).



No.	Position [m]			Rotation [°]		
	X	Y	Z	X	Y	Z
1	29.000	116.000	30.000	-70.0	10.0	0.0
2	30.000	116.000	30.000	-70.0	-10.0	0.0
3	32.000	116.000	30.000	-70.0	-40.0	0.0
4	31.000	116.000	30.000	-70.0	-30.0	0.0
5	33.000	116.000	30.000	-70.0	-50.0	0.0
6	34.000	116.000	30.000	-70.0	-70.0	0.0
7	29.000	117.000	30.000	-70.0	10.0	0.0
8	30.000	117.000	30.000	-70.0	-10.0	0.0
9	32.000	117.000	30.000	-70.0	-40.0	0.0
10	31.000	117.000	30.000	-70.0	-30.0	0.0
11	33.000	117.000	30.000	-70.0	-50.0	0.0
12	34.000	117.000	30.000	-70.0	-70.0	0.0
13	29.000	118.000	30.000	-70.0	10.0	0.0
14	30.000	118.000	30.000	-70.0	-10.0	0.0
15	32.000	118.000	30.000	-70.0	-40.0	0.0
16	31.000	118.000	30.000	-70.0	-30.0	0.0
17	33.000	118.000	30.000	-70.0	-50.0	0.0
18	34.000	118.000	30.000	-70.0	-70.0	0.0
19	29.000	119.000	30.000	-70.0	10.0	0.0
20	30.000	119.000	30.000	-70.0	-10.0	0.0
21	32.000	119.000	30.000	-70.0	-40.0	0.0
22	31.000	119.000	30.000	-70.0	-30.0	0.0
23	33.000	119.000	30.000	-70.0	-50.0	0.0
24	34.000	119.000	30.000	-70.0	-70.0	0.0
25	29.000	120.000	30.000	-50.0	10.0	0.0
26	30.000	120.000	30.000	-50.0	-10.0	0.0
27	32.000	120.000	30.000	-50.0	-40.0	0.0
28	31.000	120.000	30.000	-50.0	-30.0	0.0

Operator
Telephone
Fax
e-Mail

Exterior Scene 1 / Luminaires (coordinates list)

No.	Position [m]			Rotation [°]		
	X	Y	Z	X	Y	Z
29	33.000	120.000	30.000	-50.0	-50.0	0.0
30	34.000	120.000	30.000	-50.0	-70.0	0.0
31	148.714	116.000	30.000	-70.0	70.0	0.0
32	150.714	116.000	30.000	-70.0	40.0	0.0
33	149.714	116.000	30.000	-70.0	50.0	0.0
34	151.714	116.000	30.000	-70.0	30.0	0.0
35	152.714	116.000	30.000	-70.0	10.0	0.0
36	153.714	116.000	30.000	-70.0	-10.0	0.0
37	148.714	117.000	30.000	-70.0	70.0	0.0
38	150.714	117.000	30.000	-70.0	40.0	0.0
39	149.714	117.000	30.000	-70.0	50.0	0.0
40	151.714	117.000	30.000	-70.0	30.0	0.0
41	152.714	117.000	30.000	-70.0	10.0	0.0
42	153.714	117.000	30.000	-70.0	-10.0	0.0
43	148.714	118.000	30.000	-70.0	70.0	0.0
44	150.714	118.000	30.000	-70.0	40.0	0.0
45	149.714	118.000	30.000	-70.0	50.0	0.0
46	151.714	118.000	30.000	-70.0	30.0	0.0
47	152.714	118.000	30.000	-70.0	10.0	0.0
48	153.714	118.000	30.000	-70.0	-10.0	0.0
49	148.714	119.000	30.000	-70.0	70.0	0.0
50	150.714	119.000	30.000	-70.0	40.0	0.0
51	149.714	119.000	30.000	-70.0	50.0	0.0
52	151.714	119.000	30.000	-70.0	30.0	0.0
53	152.714	119.000	30.000	-70.0	10.0	0.0
54	153.714	119.000	30.000	-70.0	-10.0	0.0
55	148.864	120.000	30.000	-50.0	70.0	0.0
56	150.714	120.000	30.000	-50.0	40.0	0.0
57	149.714	120.000	30.000	-50.0	50.0	0.0
58	151.714	120.000	30.000	-50.0	30.0	0.0
59	152.714	120.000	30.000	-50.0	10.0	0.0
60	153.714	120.000	30.000	-50.0	-10.0	0.0
61	149.200	17.840	30.000	50.0	70.0	0.0
62	151.200	17.840	30.000	50.0	40.0	0.0
63	150.200	17.840	30.000	50.0	50.0	0.0
64	152.200	17.840	30.000	50.0	30.0	0.0
65	153.200	17.840	30.000	50.0	10.0	0.0
66	154.200	17.840	30.000	50.0	-10.0	0.0

Operator
Telephone
Fax
e-Mail

Exterior Scene 1 / Luminaires (coordinates list)

No.	Position [m]			Rotation [°]		
	X	Y	Z	X	Y	Z
67	149.200	18.840	30.000	70.0	70.0	0.0
68	151.200	18.840	30.000	70.0	40.0	0.0
69	150.200	18.840	30.000	70.0	50.0	0.0
70	152.200	18.840	30.000	70.0	30.0	0.0
71	153.200	18.840	30.000	70.0	10.0	0.0
72	154.200	18.840	30.000	70.0	-10.0	0.0
73	149.200	19.840	30.000	70.0	70.0	0.0
74	151.200	19.840	30.000	70.0	40.0	0.0
75	150.200	19.840	30.000	70.0	50.0	0.0
76	152.200	19.840	30.000	70.0	30.0	0.0
77	153.200	19.840	30.000	70.0	10.0	0.0
78	154.200	19.840	30.000	70.0	-10.0	0.0
79	149.200	20.840	30.000	70.0	70.0	0.0
80	151.200	20.840	30.000	70.0	40.0	0.0
81	150.200	20.840	30.000	70.0	50.0	0.0
82	152.200	20.840	30.000	70.0	30.0	0.0
83	153.200	20.840	30.000	70.0	10.0	0.0
84	154.200	20.840	30.000	70.0	-10.0	0.0
85	149.350	21.840	30.000	70.0	70.0	0.0
86	151.200	21.840	30.000	70.0	40.0	0.0
87	150.200	21.840	30.000	70.0	50.0	0.0
88	152.200	21.840	30.000	70.0	30.0	0.0
89	153.200	21.840	30.000	70.0	10.0	0.0
90	154.200	21.840	30.000	70.0	-10.0	0.0
91	23.980	17.808	30.000	50.0	10.0	0.0
92	24.980	17.808	30.000	50.0	-10.0	0.0
93	26.980	17.808	30.000	50.0	-40.0	0.0
94	25.980	17.808	30.000	50.0	-30.0	0.0
95	27.980	17.808	30.000	50.0	-50.0	0.0
96	28.980	17.808	30.000	50.0	-70.0	0.0
97	23.980	18.808	30.000	70.0	10.0	0.0
98	24.980	18.808	30.000	70.0	-10.0	0.0
99	26.980	18.808	30.000	70.0	-40.0	0.0
100	25.980	18.808	30.000	70.0	-30.0	0.0
101	27.980	18.808	30.000	70.0	-50.0	0.0
102	28.980	18.808	30.000	70.0	-70.0	0.0
103	23.980	19.808	30.000	70.0	10.0	0.0
104	24.980	19.808	30.000	70.0	-10.0	0.0

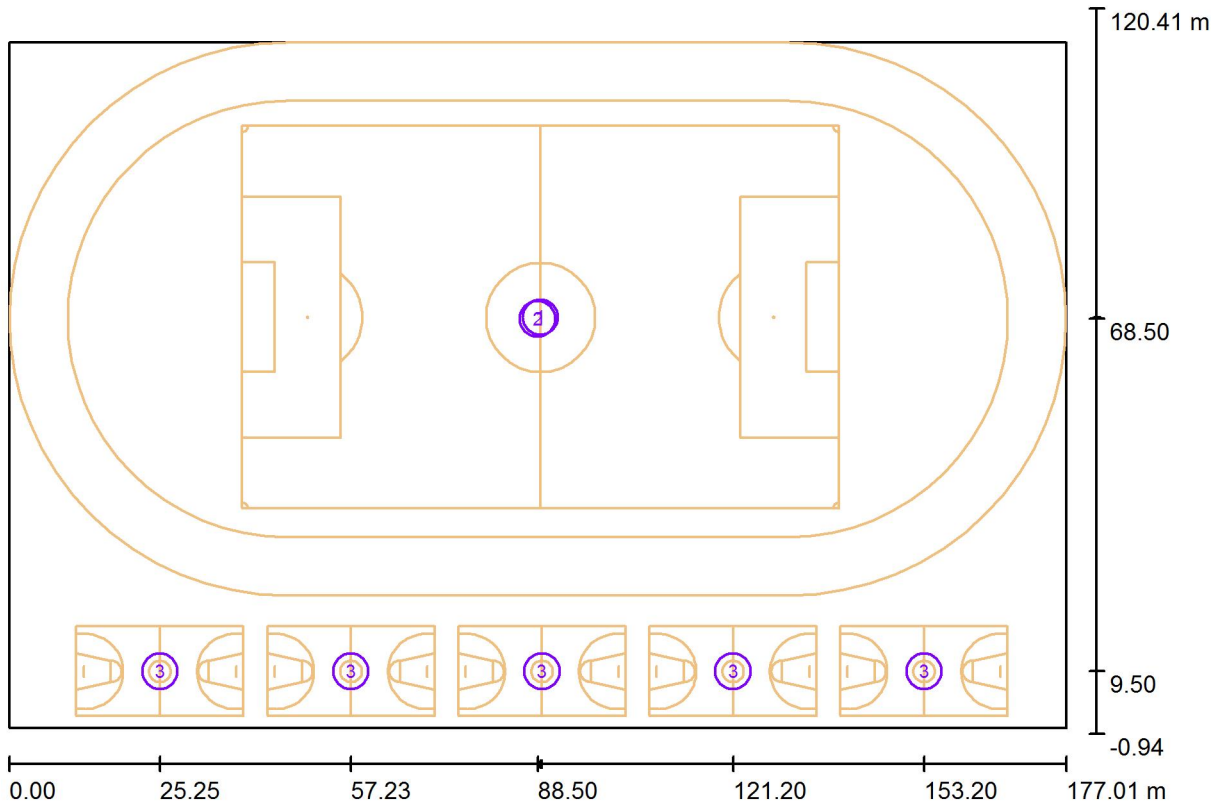
Operator
Telephone
Fax
e-Mail

Exterior Scene 1 / Luminaires (coordinates list)

No.	Position [m]			Rotation [°]		
	X	Y	Z	X	Y	Z
105	26.980	19.808	30.000	70.0	-40.0	0.0
106	25.980	19.808	30.000	70.0	-30.0	0.0
107	27.980	19.808	30.000	70.0	-50.0	0.0
108	28.980	19.808	30.000	70.0	-70.0	0.0
109	23.980	20.808	30.000	70.0	10.0	0.0
110	24.980	20.808	30.000	70.0	-10.0	0.0
111	26.980	20.808	30.000	70.0	-40.0	0.0
112	25.980	20.808	30.000	70.0	-30.0	0.0
113	27.980	20.808	30.000	70.0	-50.0	0.0
114	28.980	20.808	30.000	70.0	-70.0	0.0
115	23.980	21.808	30.000	70.0	10.0	0.0
116	25.130	21.808	30.000	70.0	-10.0	0.0
117	26.980	21.808	30.000	70.0	-40.0	0.0
118	25.980	21.808	30.000	70.0	-30.0	0.0
119	27.980	21.808	30.000	70.0	-50.0	0.0
120	28.980	21.808	30.000	70.0	-70.0	0.0

Operator
 Telephone
 Fax
 e-Mail

Exterior Scene 1 / Sport Sites (layout plan)



Scale 1 : 1266

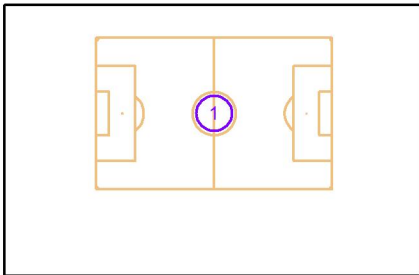
Sport Site Parts List

No.	Pieces	Designation
1	1	Soccer Field
2	1	Track
3	5	Basketball

Operator
 Telephone
 Fax
 e-Mail

Exterior Scene 1 / Sport Sites (Coordinates List)

Soccer Field

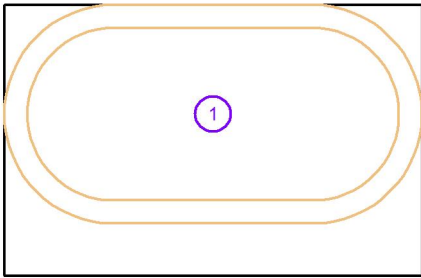


No.	Position [m]			Size Playing Area [m]		Size Total Area [m]		Rotation [°]		
	X	Y	Z	L	W	L	W	X	Y	Z
1	88.965	68.757	0.000	100.000	64.000	108.000	72.000	0.0	0.0	0.0

Operator
 Telephone
 Fax
 e-Mail

Exterior Scene 1 / Sport Sites (Coordinates List)

Track

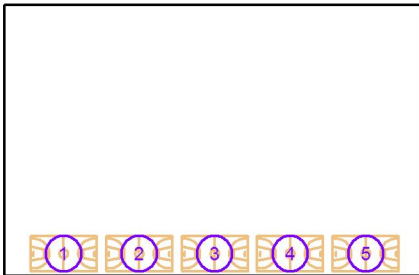


No.	Position [m]			Size Playing Area [m]		Size Total Area [m]		Rotation [°]		
	X	Y	Z	L	W	L	W	X	Y	Z
1	88.500	68.500	0.000	176.910	92.520	176.910	92.520	0.0	0.0	0.0

Operator
 Telephone
 Fax
 e-Mail

Exterior Scene 1 / Sport Sites (Coordinates List)

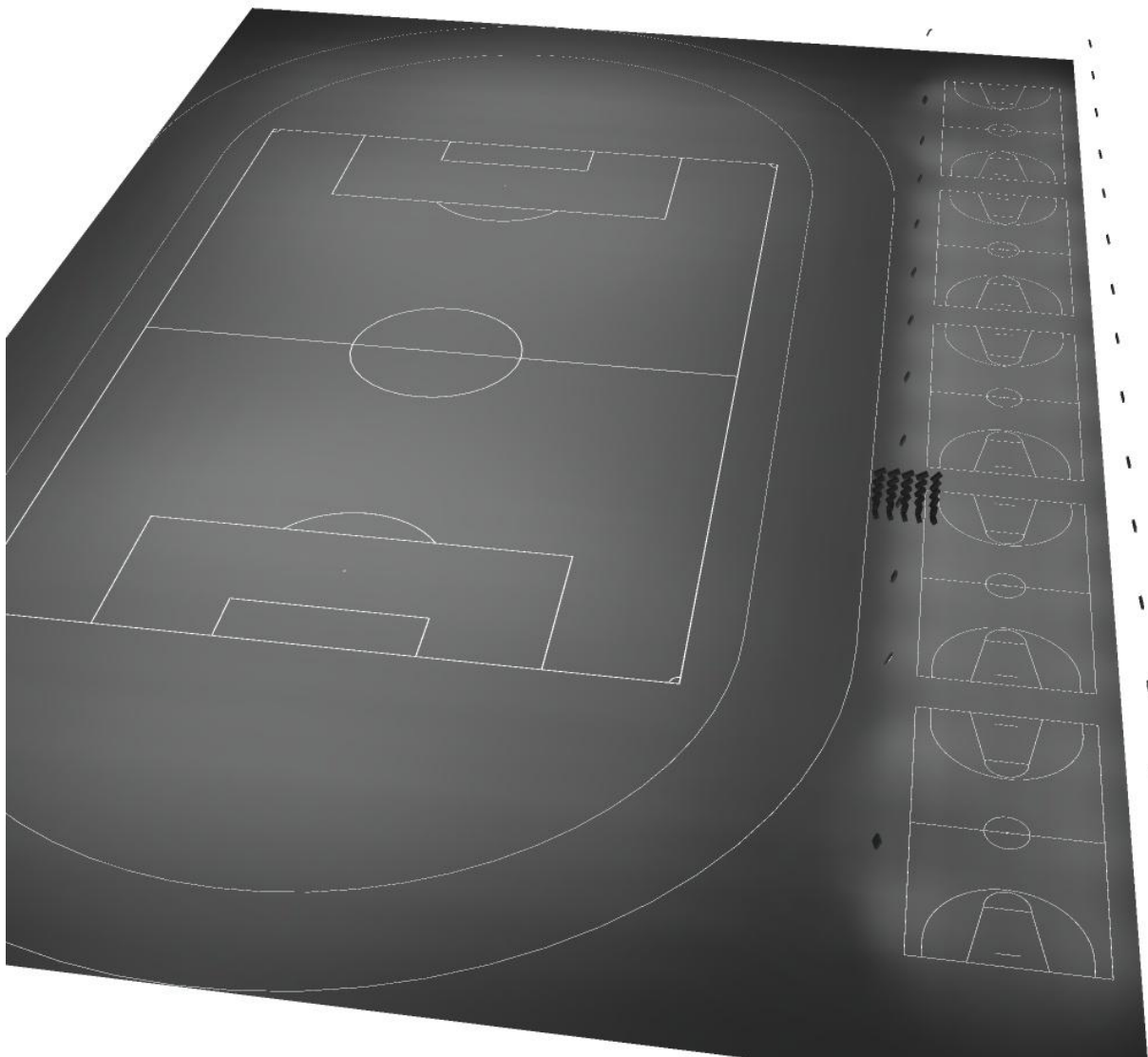
Basketball



No.	Position [m]			Size Playing Area [m]		Size Total Area [m]		Rotation [°]		
	X	Y	Z	L	W	L	W	X	Y	Z
1	25.255	9.500	0.000	28.000	15.000	32.000	19.000	0.0	0.0	0.0
2	57.233	9.500	0.000	28.000	15.000	32.000	19.000	0.0	0.0	0.0
3	89.210	9.500	0.000	28.000	15.000	32.000	19.000	0.0	0.0	0.0
4	121.200	9.500	0.000	28.000	15.000	32.000	19.000	0.0	0.0	0.0
5	153.200	9.500	0.000	28.000	15.000	32.000	19.000	0.0	0.0	0.0

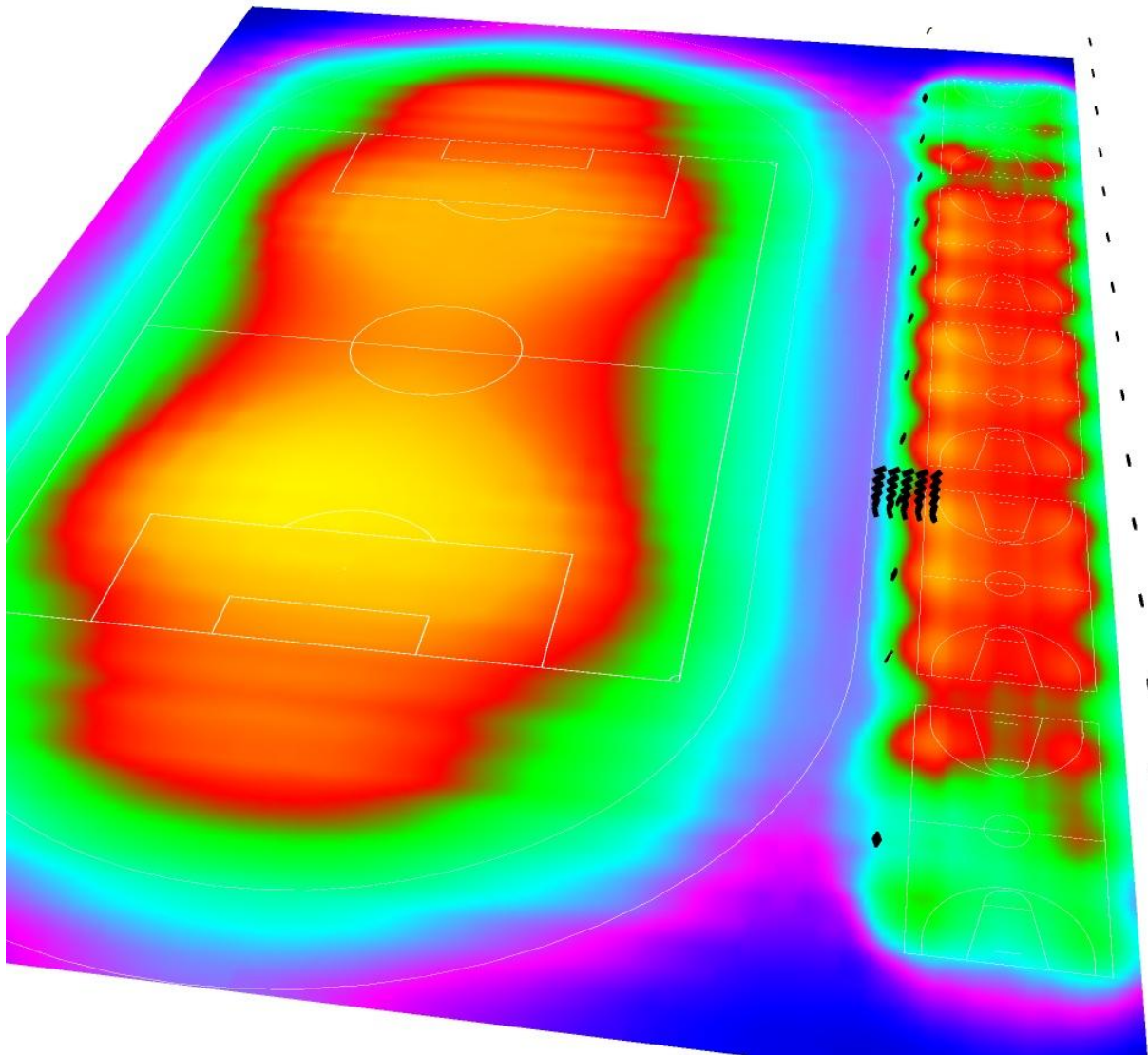
Operator
Telephone
Fax
e-Mail

Exterior Scene 1 / 3D Rendering



Operator
Telephone
Fax
e-Mail

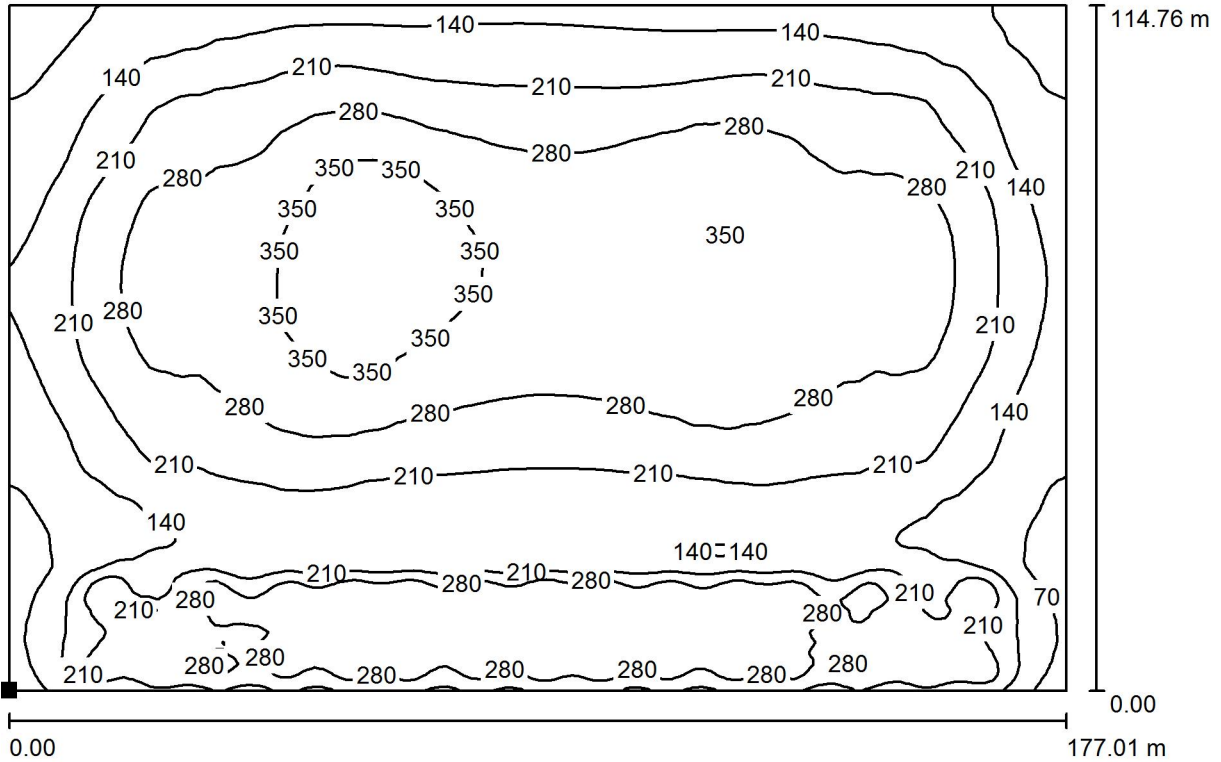
Exterior Scene 1 / False Color Rendering



10 65 120 175 250 285 340 395 450 lx

Operator
 Telephone
 Fax
 e-Mail

Exterior Scene 1 / Ground Element 1 / Surface 1 / Isolines (E)



Values in Lux, Scale 1 : 1266

Position of surface in external scene:

Marked point:
 (0.000 m, 0.000 m, 0.000 m)

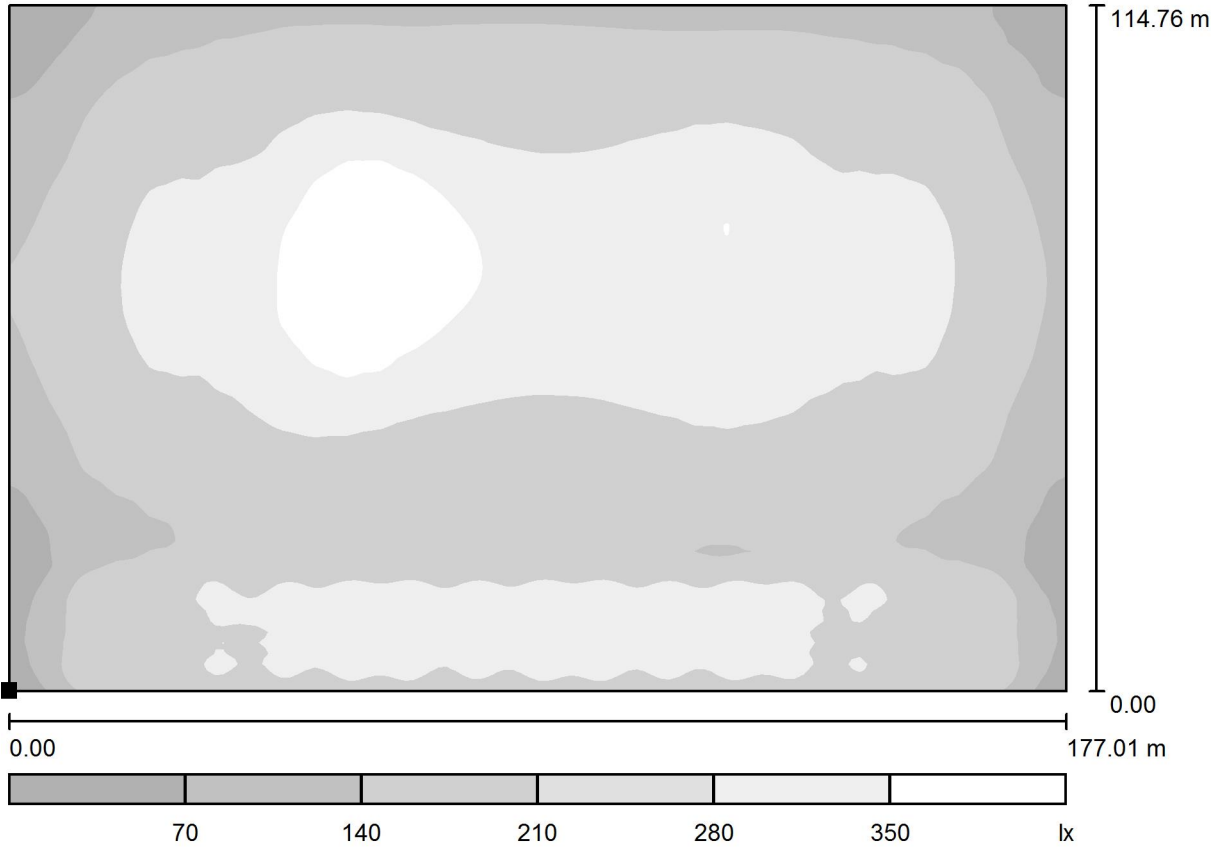


Grid: 128 x 128 Points

E_{av} [lx]	E_{min} [lx]	E_{max} [lx]	u_0	E_{min} / E_{max}
233	42	391	0.182	0.109

Operator
Telephone
Fax
e-Mail

Exterior Scene 1 / Ground Element 1 / Surface 1 / Greyscale (E)



Scale 1 : 1266

Position of surface in external scene:
Marked point:
(0.000 m, 0.000 m, 0.000 m)



Grid: 128 x 128 Points

E_{av} [lx]
233

E_{min} [lx]
42

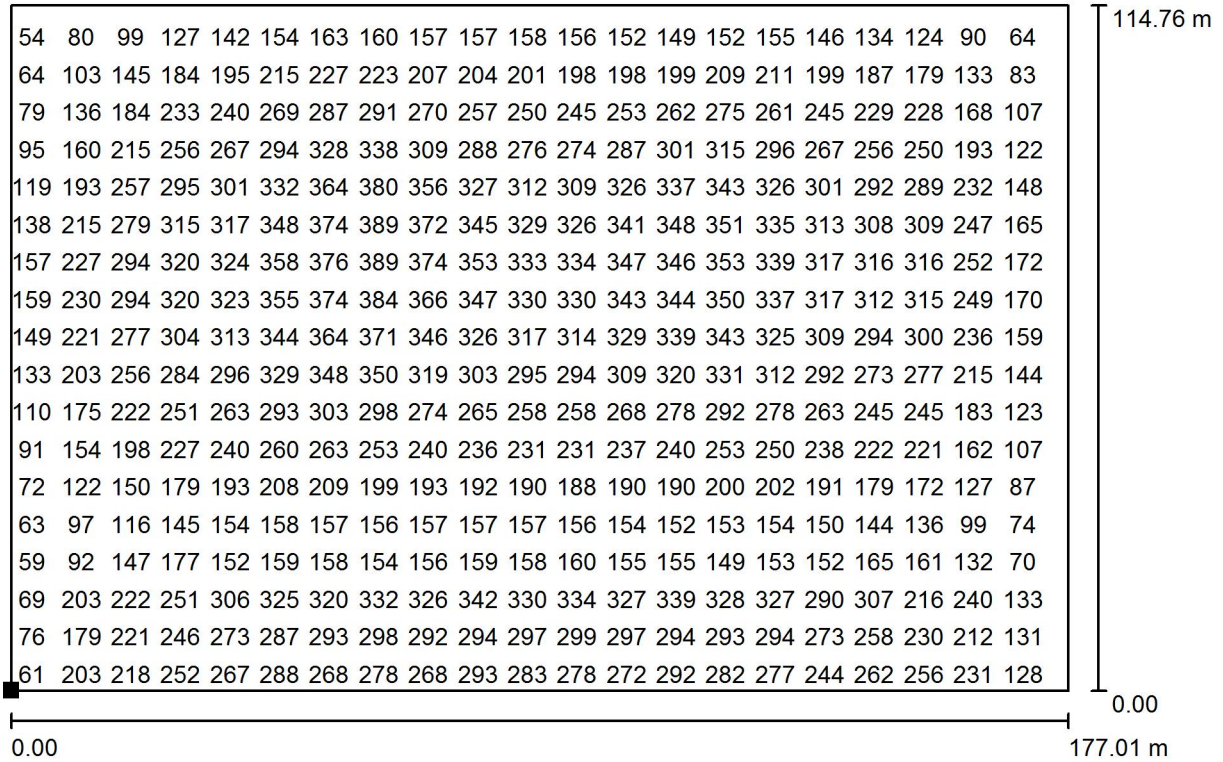
E_{max} [lx]
391

$u0$
0.182

E_{min} / E_{max}
0.109

Operator
Telephone
Fax
e-Mail

Exterior Scene 1 / Ground Element 1 / Surface 1 / Value Chart (E)



Values in Lux, Scale 1 : 1266

Not all calculated values could be displayed.

Position of surface in external scene:

Marked point:
(0.000 m, 0.000 m, 0.000 m)



Grid: 128 x 128 Points

E_{av} [lx]	E_{min} [lx]	E_{max} [lx]	u0	E_{min} / E_{max}
233	42	391	0.182	0.109